

LinkedIn

@GavinStarks

@IcebreakerOne

To go far, we go together.

**IB1.ORG**

Join us.



**THE TIME  
FOR THEORY  
IS OVER**



“

Missing **information flows** are one of the most common causes of system malfunction.

Adding or restoring information can be a powerful intervention, usually much easier and cheaper than rebuilding physical infrastructure.

— Thinking in Systems, Donella Meadows, 1993

# What is a Net Zero data ecosystem?



## Input data

- Energy data flow
- Asset-level data
- Operational data
- Embodied carbon
- Policy & regulation
- Geospatial
- Environmental
- Climate science

## Modelled data

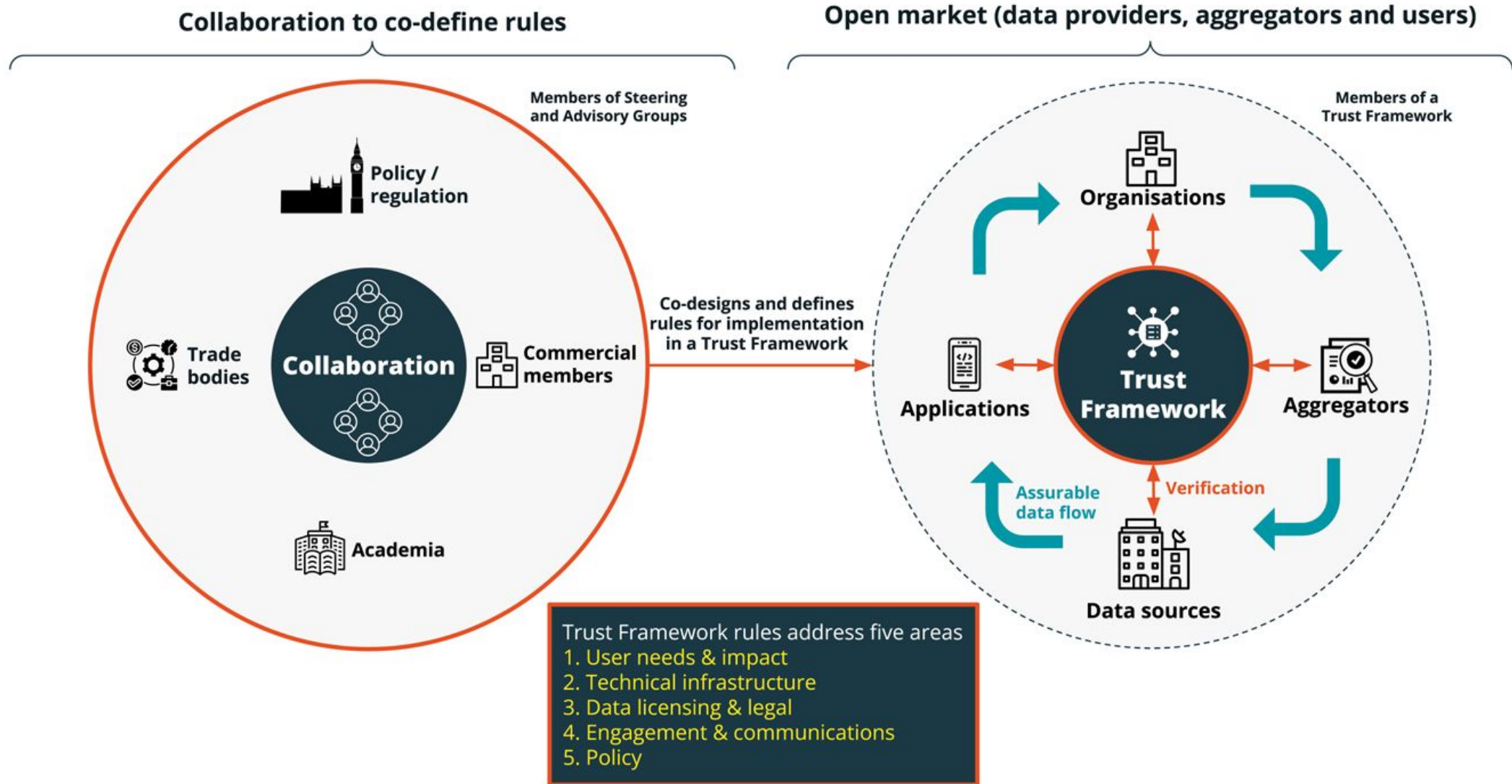
- Flexibility
- Demand response
- Energy efficiencies
- Grid optimisation
- Risks & hazards
- Exposure & vulnerabilities
- Financial stresses

## Output data

- GHG/ESG reporting
- Financial risk ratings
- Financial forecasts
- Emissions data

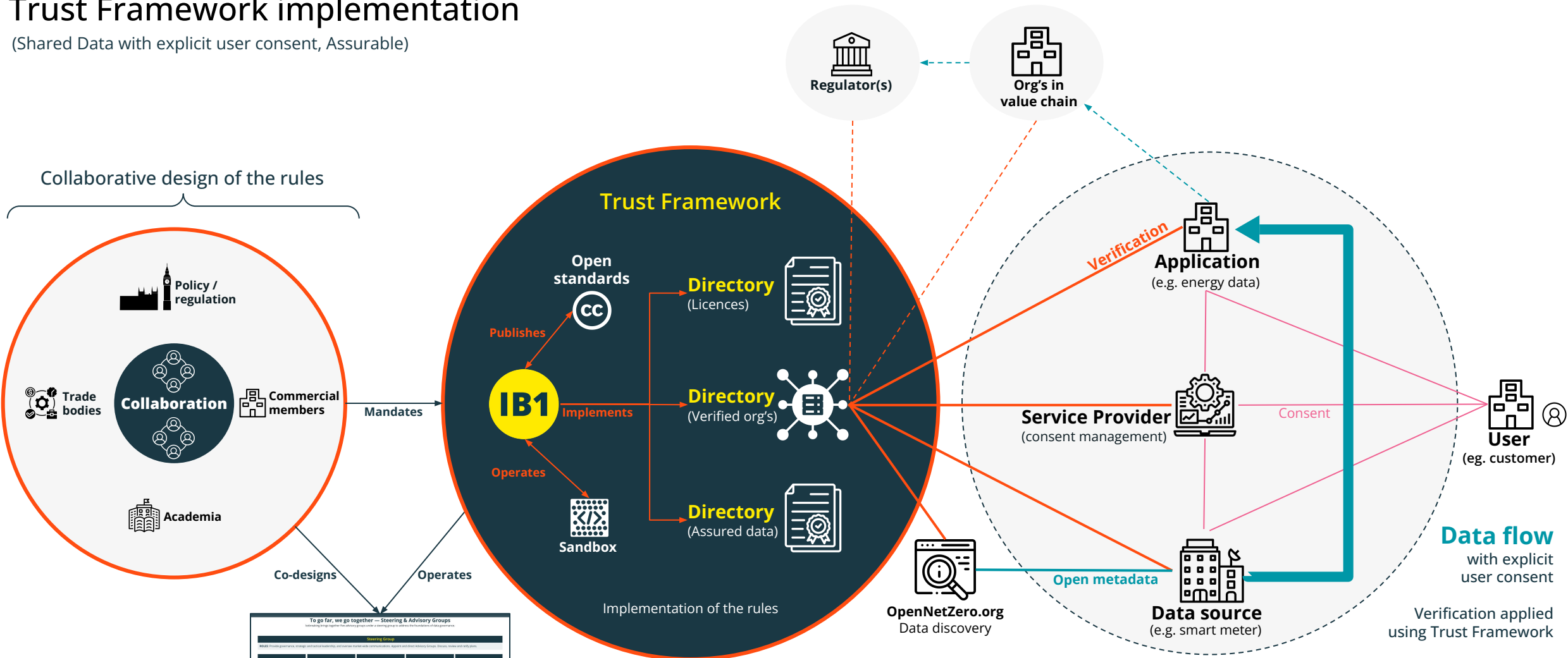
# How collaboratively designed rules can support an open market architecture

A **Trust Framework** is an effective way to implement and automate the adoption of **rules** for data providers, aggregators and users, to share data securely at market-wide scale. It enables **assurable data flow** between organisations peer-to-peer, while a Trust Framework **verifies** that organisations and their data sharing are compliant with the rules.



# Trust Framework implementation

(Shared Data with explicit user consent, Assurable)



To go far, we go together — Steering & Advisory Groups

Steering Group				
<b>User Needs, Maturity, Impact</b> Define user needs, maturity, impact through user needs analysis, maturity assessment, impact analysis.	<b>Technical Infrastructure, Technical standards &amp; systems</b> Define technical infrastructure, standards, systems for publishing, data licensing, legal, engagement and data access.	<b>Data Licensing &amp; Legal, Legal, rights &amp; consent</b> Define data licensing, legal, rights, liability, communication, policies.	<b>Engagement &amp; Communications</b> Develop engagement, communication, outreach, marketing, branding, public relations.	<b>Policy</b> Develop policy, governance, standards, best practices, recommendations.

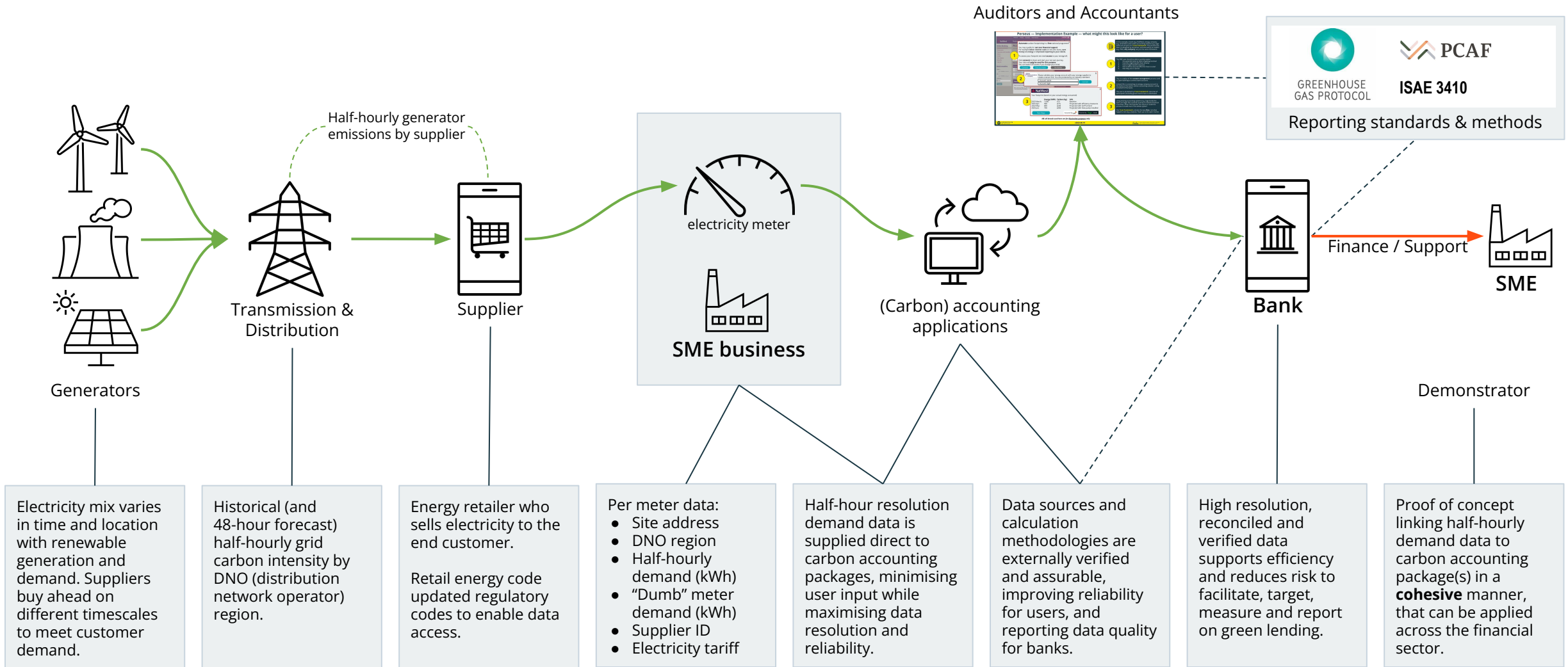
**Icebreaking processes**  
(Steering, Advisory and Working Groups)

**Icebreaking**  
Process to co-define rules through collaborative, multi-stakeholder engagement

**Licences**  
Codified rules (legal, technical, rights, liability, communication, policies)

**Verification and Assurance**  
Tests to what levels organisations and/or datasets are compliant

# Perseus — energy data flow and analytics v2023-09-27



For illustration only: examples of actors in this value chain (not all are members, and not all member logos are included):

nationalgridESO

SSE

recco

Data Communications Company

demand logic

Sage

Normative

energetic

perse

INTUIT COGO

CARBONLACES

Connect Earth

pwc

HSBC

tide

Allica Bank

NatWest



**Connect  
Don't  
Collect**



LinkedIn

@GavinStarks

@IcebreakerOne

To go far, we go together.

**IB1.ORG**

Join us.

